



24²
MEGAPIXEL

VARI-ANGLE
TOUCH SCREEN

39
FOCUS
POINTS

BUILT-IN WIFI®

I AM READY TO IMPRESS

D5500

www.europe-nikon.com

At the heart of the image





Capture your best images yet

Do your world justice with the new D5500. Lightweight and powerful, this slimline D-SLR with familiar touchscreen operation frees you to do more with your photography.

From fast movement to challenging low-light situations, the D5500 ensures you'll capture crisp, clean images more often than ever before. Combine the power of this camera with the power of a NIKKOR lens, and you get images that explode with clarity. Even when printed large or shown on a big screen, your photos and movies will be crystal-clear reflections of the way you see the world.

The responsive vari-angle touchscreen offers intuitive operation, and built-in Wi-Fi makes it simple to share your high-quality photos via a smart device.¹ With a lightweight yet tough carbon-fiber monocoque structure and a deep grip, this exceptionally portable D-SLR puts perfection within your reach.

1 To prepare your smart device to receive photos, simply download the free Wireless Mobile Utility. The Wireless Mobile Utility is compatible with iOS™ and Android™ smart devices, and can be downloaded to your smart device from Google Play™ and the Apple App Store™. Android, Google, Google Play, YouTube, and other marks are trademarks of Google Inc.

D5500



Impress friends with striking photos as soon as you shoot them.



Capture even subtle colour gradations as vividly as you see them.



Take blur-free pictures in low light using high ISO sensitivity and advanced noise reduction.



Track fast action through the viewfinder and capture every move in sharp focus.



High or low? Find your own vantage point using the vari-angle monitor.



Transfer pictures to your smart device and share them instantly.



Convenient vari-angle monitor with touch interface.



Smooth movie recording with touch autofocus.



Intuitive operation: quickly change settings via the touchscreen.



Quick image transfer from the D5500 to a smartphone via built-in Wi-Fi.



Wi-Fi remote shooting using a smartphone—ideal for group shots.

Intuitive to use & fully connected

Vari-angle touchscreen

As intuitive to shoot with as any smart device, the D5500 is designed to ensure you'll feel completely in tune with what you're doing. Simply flip, tilt, or rotate the vari-angle monitor to compose shots from exciting angles, and tap the responsive touchscreen to focus and shoot. You can even adjust settings such as aperture, ISO, and shutter speed at a touch when taking photos. And when you want to see what you've shot, just swipe to scroll through images, or pinch-to-zoom during playback.



Swipe left or right to move between photos and movies during playback.

Pinch to zoom in or out.



Quickly change settings via the touchscreen.

Create and connect



Why keep amazing, D-SLR-quality photos to yourself? Thanks to the D5500's built-in Wi-Fi function, photos can be sent directly to any smart device² so they're ready for easy upload to social media. As a Nikon owner, you can also take advantage of 20 GB of free storage on NIKON IMAGE SPACE.

The Wi-Fi function even makes it possible to shoot remotely using your smart device: thanks to the D5500's vari-angle monitor and the quality of the images, your self-portraits are sure to turn heads.

² To prepare your smart device to receive photos, simply download the free Wireless Mobile Utility. The Wireless Mobile Utility is compatible with iOS™ and Android™ smart devices, and can be downloaded to your smart device from Google Play™ and the Apple App Store™. Android, Google, Google Play, YouTube, and other marks are trademarks of Google Inc.

All about comfort and style

The exceptionally portable D5500 will be your camera of choice more often than you'd expect. The new carbon-fiber monocoque structure ensures the slim yet sturdy build, and allows for a deep grip. Pick this camera up and you'll be surprised by how light it is: curve your fingers around the grip, and you won't want to put it down. Newly designed dials and controls are easier to reach and boast a textured finish that lends the camera a definite sense of style. Efficient with energy, too, the supplied EN-EL14a Rechargeable Li-ion Battery delivers approx. 820 still shots per charge.³ And it's not just the camera that is so portable: the new AF-S DX NIKKOR 55–200mm f/4–5.6G ED VR II telephoto zoom lens boasts a retractable lens mechanism and an incredibly compact build. With this lens and the D5500, you can discover the creative advantages of shooting telephoto without having to carry heavy gear.



D5500 + AF-S DX NIKKOR DX 55–200mm f/4–5.6G ED VR II

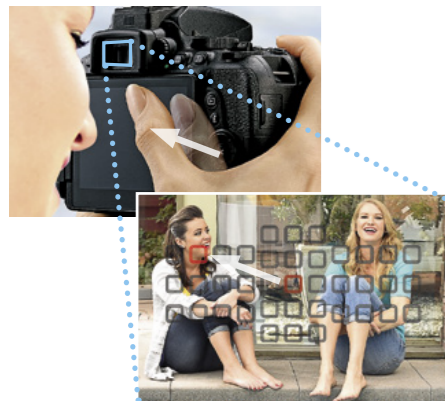
D5300 + AF-S DX VR Zoom-Nikkor 55–200mm f/4–5.6G IF-ED

³ In single-frame release mode and based on CIPA standards.

See it, keep it

Intuitive viewfinder shooting

The D5500 adds a new level of convenience to viewfinder shooting. Thanks to the newly introduced Touch Fn function, you can quickly adjust key settings via the touchscreen without taking your eye away from the viewfinder. Up to eight settings can be assigned to this function, including focus points, AF area modes, aperture, and ISO sensitivity. Numbers and icons confirming any changes you make will appear in the viewfinder.

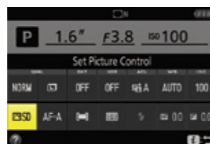


Quickly change the focus point by sliding your thumb over the touchscreen.

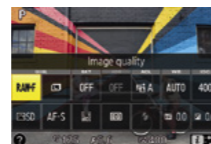
Quickly change key settings



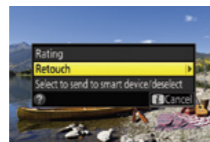
Because you never know how a moment will unfold, the D5500 makes it simple to quickly change settings via the **i** button. Whether you are shooting through the viewfinder or in Live View, the **i** button gives you direct access to frequently used settings without having to go into the camera menu. During image playback, you can use the **i** button to jump to the Retouch menu, or select the images you want to send to your smart devices.



During viewfinder shooting
Change settings quickly via the **i** button, even when the camera monitor is turned off.



During Live View shooting
Change settings simply by touching the **i** button on the touchscreen.



During playback
Press the **i** button on the back of the camera to rate pictures, retouch photos, edit movies, and select images to send to a smart device.

Images that always impress

Leave image blur behind and enjoy the freedom to create vibrant, richly detailed images. Specifically designed without an optical low-pass filter (OLPF), the D5500's large DX-format image sensor makes the most of the camera's 24.2-megapixel resolution to render images with incredibly crisp detail—especially when captured with a NIKKOR lens. And with Nikon's EXPEED 4 image processor enabling high-speed operation, advanced noise reduction, and smooth movie recording, you're free to capture memorable moments with confidence.



Superior light sensitivity

Shoot brilliant photos and movies even when the light is scarce. With a wide ISO range of 100–25600, you'll achieve crisp, clean images more often than ever before. Enjoy the freedom to capture blur-free images at indoor events and parties without using a flash.



ISO 25600

Perfectly reflect your creative vision



The D5500's in-camera Picture Control system makes it easy to take complete control over sharpening, contrast, brightness, hue, and saturation when shooting stills and video. Choose between seven modes: Standard, Neutral, Vivid, Monochrome, Portrait, Landscape, and Flat. The new Flat setting retains all the details and preserves rich tonal information, making it the ideal choice if you plan to retouch images after shooting.

Don't let difficult lighting spoil a shot

Two modes help you capture the details in both dark and bright areas when you shoot images in strong light, or in backlit situations. HDR (High Dynamic Range) is ideal for stationary subjects, and Active D-Lighting is ideal for photos of moving subjects. Both modes allow you to select the intensity level.



• Lens: AF-S DX NIKKOR 18–55mm f/3.5–5.6G VR II
• Image quality: 14-bit RAW (NEF) • Exposure: [A] mode, 1/100 second, f/8
• White balance: Auto • Sensitivity: ISO 200 • Picture Control: Standard
©Dixie Dixon



Photography that doesn't miss a beat

Get an intimate view of the action

See what the camera sees, and shoot with absolute clarity. Whether you're shooting a party of friends or a rock gig, put your eye to the viewfinder and you can shoot without delay or distraction. To make the shooting process even smoother, the D5500 automatically displays the image you've just shot on the LCD monitor the moment you take your eye away from the viewfinder.

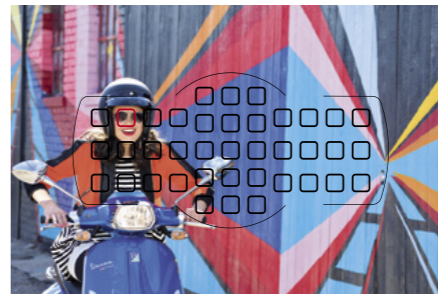
Keep a lock on fast-moving subjects

Some subjects move too quickly and erratically to keep them in focus. With 39 focus points that cover a wide area of the frame, the D5500's autofocus system helps you acquire and keep track of your target with remarkable precision. Choose from multiple AF area modes including single-point AF, dynamic-area AF, 3D tracking, and auto-area AF.

Seize those split-second moments

Even when the action is fast, the D5500 can keep up. Capable of shooting at a swift 5 frames-per-second⁴ with full AF performance, this camera captures every move. Fleeting gestures or facial expressions can be snapped at exactly the right moment, and in vivid detail, thanks to the camera's 24.2-megapixel resolution.

⁴ Based on CIPA Guidelines.





Shot from above, with the camera held away from the body.



Shooting from a low angle.



VI Super vivid (Special Effects)



POP Pop (Special Effects)

Unleash your creative spark

Find a fresh point of view



Whether you shoot from on high or down low, the D5500's vari-angle monitor ensures comfortable Live View photography. Whichever position you hold the camera in, the wide, 8.1-cm/3.2-in touchscreen makes it easy to capture the shot you want.

Give your images an artistic touch



Turn your photos and movies into unique works of art. Take your pick from ten Special Effects, including Super Vivid, Selective Colour, and Miniature, and apply them in-camera as you shoot. Shoot in Live View and the effects appear on the screen in real time, so you can check how they'll look before taking the shot.

Create finished pictures on the spot

Trim, resize, or apply filter effects and add the final touch to your images in-camera using the Retouch menu. New options in the D5500 include Photo Illustration and Painting, as well as simple movie editing.



Selective colour (Special Effects)



Silhouette (Special Effects)



Lo Low key (Special Effects)



Hi High key (Special Effects)



Special Effects on the D5500

- Night vision · VI Super vivid · POP Pop
- Photo illustration^{5,6} · Toy camera effect⁵
- Miniature effect^{5,7} · Selective Colour⁵
- Silhouette · High key · Low key

⁵ These effects can be adjusted in Live View.

⁶ Movies taken with this effect will play back like a slide show comprised of a series of stills.

⁷ Movies taken with this effect play back at high speed. Sound is not recorded.

Retouch menus on the D5500

- NEF (RAW) processing · Trim · Resize
- D-Lighting · Quick retouch · Red-eye correction
- Straighten · Distortion control
- Perspective control · Fisheye · Filter effects
- Monochrome · Image overlay · Colour outline
- Photo illustration · Colour sketch
- Miniature effect · Selective colour · Painting
- Edit movie

Push your photography further



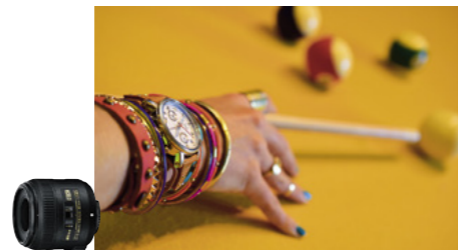
AF-S DX NIKKOR 10–24mm f/3.5-4.5G ED

This ultra wide-angle zoom lens delivers dramatic perspectives with minimal distortion. At its widest end of 10 mm, it covers a 109° angle of view, which is almost fisheye and goes beyond the view you see with your own eyes.



AF-S DX NIKKOR 35mm f/1.8G

Fast prime lens for beautiful bokeh. This lens delivers images that combine amazing sharpness with gorgeous, softly blurred backgrounds. It also excels in low light, thanks to its fast aperture.



AF-S DX Micro NIKKOR 40mm f/2.8G

Small, lightweight lens designed for use at very close range. Lets you capture intricate details and delicate textures, and depict them against beautiful background bokeh.

More lenses, more variety

The quality of NIKKOR lenses is one of the main advantages of a Nikon D-SLR over every other type of camera. Use a fast prime lens for beautiful background blur, a telephoto lens for distant subjects, or a wide-angle lens for dramatic effect. Whichever you choose, you get the precision and flexibility to make the most of the camera's 24.2-megapixel resolution: enjoy capturing photos with vivid colour and striking contrast, or experiment with cinematic effects when shooting movies.

NIKKOR



AF-S DX NIKKOR 18–300mm f/3.5–6.3G ED VR

The ideal travel companion, this 16.7x ultra high-power zoom lens offers great image quality and incredible versatility. Powerful built-in Vibration Reduction lets you shoot blur-free images at shutter speeds up to four stops slower,⁸ and helps counter the effects of camera shake for clear, blur-free images.

⁸ Based on CIPA standards.



- Lens: AF-S DX NIKKOR 35mm f/1.8G
- Image quality: 14-bit RAW (NEF)
- Exposure: [M] mode, 1/125 second, f/3.5
- White balance: Auto
- Sensitivity: ISO 400
- Picture Control: Neutral (applied in post-production)

©Dixie Dixon

Connecting an SB-500 Speedlight to the D5500 via an SC-28/SC-29 TTL Remote Cord⁹ lets you light a scene from various angles. Here, the flash is held backward and bounced off the top part of a white wall behind the photographer, evenly illuminating the subject.

⁹ The SC-28/SC-29 TTL Remote Cord is required to connect an off-camera Speedlight with the D5500.



Take control of the light

It's not always easy to capture subjects exactly the way you when shooting with ambient lighting. In dark or backlit situations, the D5500's built-in flash will automatically brighten your subject. When you want more control over the quality and direction of light, Nikon Speedlights, like the SB-300, are a handy way to attain creative, beautifully lit images. For video footage, try the SB-500, which boasts an onboard high-intensity LED light that's ideal for movie recording.

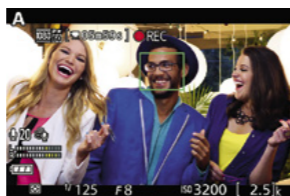


SB-500 on the D5500

Movies that fulfill your wildest dreams



Action, rendered amazingly smoothly



Shooting photos is only half the fun with the D5500. When the occasion calls for video, the D-Movie function records smooth, finely detailed Full HD video clips at frame rates up to 50p/60p. The vari-angle screen will fuel your creativity further, while the cinematic effects of NIKKOR lenses will make you the envy even of professional filmmakers.

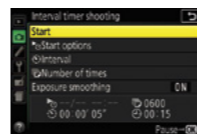
Brilliant results, even in poor light

With an ISO range that's expandable up to ISO 25600, you can capture rich, clear movie footage even when the light is limited. Enjoy the freedom to film street scenes at night, or record the fun at indoor parties, all without using extra lighting equipment.

Connect instantly to TVs and monitors

The D5500's movies and photos may look good on the camera monitor, but just wait until you've seen them on an HDTV. Easily hook up the camera to external screens using its HDMI mini-pin connector (Type C). Take advantage of the camera's HDMI-CEC compatibility to operate playback using a TV remote control.

Shoot with a different flow



Movies aren't the only way to capture a sequence of events with the D5500. The camera's Interval timer shooting mode lets you take a series of photos at fixed intervals, for up to 9,999 frames. This sequence of high-quality images can then be used to create stunning time-lapse sequences.¹⁰ If you're shooting a scene where the brightness changes gradually, such as at sunrise or sunset, use the exposure smoothing function to ensure smooth transitions between each image and obtain natural-looking results with no flicker.

¹⁰ Requires third-party software.

Advanced audio features for crisp, clear audio



Built-in microphone



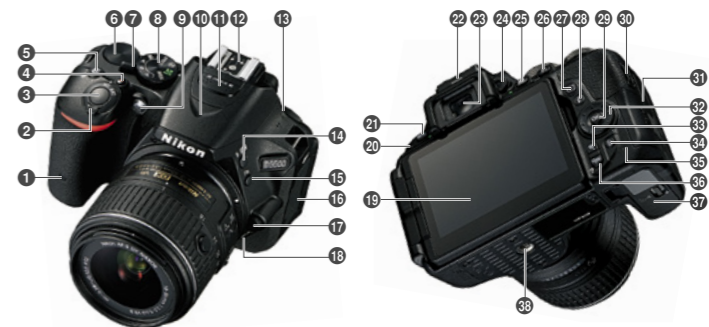
Microphone sensitivity control

Sound quality can make a movie. Thankfully, the D5500 has a built-in stereo microphone, and is compatible with Nikon's ME-1 Stereo Microphone, which picks up less of the noise that's caused by the lens autofocus mechanism. Both microphones can be fine-tuned automatically, or manually, before a shoot.



ME-1 on the D5500

Nomenclature



- | | | |
|---|--|---|
| 1 Infrared receiver for ML-L3 Remote Control (front) | 15 Function button | 27 Playback button |
| 2 Power switch | 16 Connector cover (Accessory terminal, Connector for external microphone, USB, and A/V connector) | 28 \bar{z} button |
| 3 Shutter-release button | 17 Lens release button | 29 OK button |
| 4 Movie-record button | 18 Release mode button/Continuous shooting button/Self-timer button/Remote control button | 30 HDMI connector cover |
| 5 Exposure compensation button/Aperture adjustment button/Flash compensation button | 19 Vari-angle monitor | 31 Memory card slot cover |
| 6 Command dial | 20 Infrared receiver for ML-L3 Remote Control (rear) | 32 Multi selector |
| 7 Live View switch | 21 Menu button | 33 Playback zoom-in button |
| 8 Mode dial | 22 Eye sensor | 34 Delete button |
| 9 AF-assist illuminator/Self-timer lamp/Red-eye reduction lamp | 23 Viewfinder eyepiece | 35 Memory card access lamp |
| 10 Built-in flash | 24 Diopter adjustment control | 36 Playback zoom-out button/Thumbnails button/Help button |
| 11 Stereo microphone | 25 Information button | 37 Battery-chamber cover |
| 12 Accessory shoe (for optional flash units) | 26 AE/AF lock button/Protect button | 38 Tripod socket |
| 13 Speaker | | |
| 14 Flash mode button/Flash compensation button | | |

Nikon Digital SLR Camera D5500 Specifications

View camera	Single-lens reflex digital camera
Nens mount	Nikon F-mount (with AF contacts)
Effective angle of view	Nikon DX format; focal length equivalent to approx. 1.5x that of lenses with FX-format angle of view
Effective pixels	24.2 million
Image sensor	23.5 x 15.6 mm CMOS sensor
Total pixels	24.7 million
Dust-reduction system	Image Sensor Cleaning, Image Dust Off reference data (Capture NX-D software required)
Image size (pixels)	• 6000 x 4000 [L] • 4496 x 3000 [M] • 2992 x 2000 [S]
File format	• NEF (RAW): 12 or 14 bit, compressed • JPEG: JPEG-Baseline compliant with fine (approx. 1:4), normal (approx. 1:8) or basic (approx. 1:16) compression • NEF (RAW) + JPEG: Single photograph recorded in both NEF (RAW) and JPEG formats
Picture Control System	Standard, Neutral, Vivid, Monochrome, Portrait, Landscape, Flat; selected Picture Control can be modified; storage for custom Picture Controls
Storage media	SD (Secure Digital) and UHS-I compliant SDHC and SDXC memory cards
File system	DCF 2.0, DPOF, Exif 2.3, PictBridge
Viewfinder	Eye-level pentamirror single-lens reflex viewfinder
Frame coverage	Approx. 95% horizontal and 95% vertical
Magnification	Approx. 0.82-1.90 mm/1/4 lens at infinity, 1.0 mm ⁻¹
Eye point	17 mm, 1.0 m ⁻¹ ; from center surface of viewfinder eyepiece lens
Dioptric adjustment	-1.7 to +0.5 m ⁻¹
Focusing screen	Type B BriteView Clear Matte Mark VII screen
Reflex mirror	Quick return
Lens aperture	Instant return, electronically controlled
Compatible lenses	Autofocus is available with AF-S and AF-I lenses; autofocus is not available with other type G and D lenses, AF lenses (IX NIKKOR and lenses for the F3AF are not supported), and AI-P lenses; non-CPU lenses can be used in mode M, but the camera exposure meter will not function The electronic rangefinder can be used with lenses that have a maximum aperture of 1/5.6 or faster
Shutter type	Electronically controlled vertical-travel focal-plane shutter
Shutter speed	1/4000 to 30 s in steps of 1/3 or 1/2 EV; Bulb, Time
Flash sync speed	X=1/200 s; synchronizes with shutter at 1/200 s or slower
Release modes	[S] (single frame), [C] (continuous L), [CH] (continuous Hi), [Q] (quiet shutter release), [S] (self-timer), [B] (delayed remote), ML-L3, [B] (quick-response remote), ML-L3; interval timer (photography supported)
Frame advance rate	• [C]: Up to 3 fps • [CH]: Up to 5 fps (UPES and 12-bit NEF/RAW) or 4 fps (14-bit NEF/RAW) Note: Frame rates assume continuous servo AF, manual or shutter-priority auto exposure, a shutter speed of 1/250 s or faster, Release selected for Custom Setting at iAF-C priority selection and other settings at default values
Self timer	2.5, 5, 10, 20, 3, 1 to exposures
Exposure metering mode	TLT exposure metering using 2016-pixel RGB sensor
Metering method	• Matrix, 3D colour matrix metering II (type G, E and D lenses), colour matrix metering II (other CPU lenses) • Center-weighted, 75% given to 8-mm circle in center of frame • Spot: Meters 3.5-mm circle (about 2.5% of frame) centered on selected focus point • Matrix or center-weighted metering: 0 to 20 EV • Spot metering: 2 to 20 EV
Metering range (ISO 100, 1/4 lens, 20°C/68°F)	
Exposure meter coupling	CPU
Exposure modes	Auto modes: [A] auto, [S] auto, flash off, programmed auto with flexible program [P], shutter-priority auto [S], aperture-priority auto [A], manual [M], scene modes: [L] portrait, [S] landscape, [C] child, [S] sports, [C] close up, [M] night portrait, [M] night landscape, [M] party/indoor, [S] beach/snow, [S] sunset, [S] dusk/dawn, [M] pet portrait, [C] candlelight, [S] blossom, [C] autumn colours, [M] food; special effects modes: [M] night view, [M] super vivid, [M] pop, [M] photo illustration, [M] by camera effect, [M] miniature effect, [M] selective colour, [M] silhouette, [M] high key, [M] low key)
Exposure compensation	Can be adjusted by -5 to +5 EV in increments of 1/3 or 1/2 EV in P, S, A, M, SCENE and [Q] modes
Exposure bracketing	3 shots in steps of 1/3 or 1/2 EV
Exposure lock	Luminosity locked at detected value with [L] button
ISO sensitivity (Recommended Exposure Index)	ISO 100 to 25600 in steps of 1/3 EV; auto ISO sensitivity control available
Active D-Lighting	Auto, extra high, high, normal, low, off
3D bracketing	2 shots
Autofocus	Nikon Multi-CAM 4800DX autofocus sensor module with TLT phase detection, 39 focus points (including 9 cross-type sensors), and AF-assist illuminator (range approx. 0.5 to 3 m/1 ft 8 in. to 9 ft 10 in.)
Detection range	-1 to +19 EV (ISO 100, 20°C/68°F)
Lens servo	• Autofocus (AF): Single-servo AF (AF-S); continuous-servo AF (AF-C); auto AF-S/AF-C selection (AF-A); predictive focus tracking activated automatically according to subject status • Manual focus (MF): Electronic rangefinder can be used
Focus point	Can be selected from 39 or 11 focus points
AF-area modes	Single-point AF, 9-, 21- or 39-point dynamic-area AF, 3D-tracking, auto-area AF
Focus lock	Focus can be locked by pressing shutter-release button halfway (single-servo AF) or by pressing [L] button
Built-in flash	Flash, AF-assist, AF-assist illuminator, AF-assist illuminator, AF-assist illuminator, AF-assist illuminator, AF-assist illuminator, AF-assist illuminator
Guide number	Approx. 12/35, 12/38 with manual flash (m/ft, ISO 100, 20°C/68°F)

Flash control	TLT: i-TTL flash control using 2016-pixel RGB sensor is available with built-in flash; i-TTL balanced fill-flash for digital SLR is used with matrix and center-weighted metering, standard i-TTL flash for digital SLR with spot metering
Flash modes	Auto, auto with red-eye reduction, auto slow sync, auto slow sync with red-eye reduction, fill-flash, red-eye reduction, slow sync, slow sync with red-eye reduction, rear-curtain with slow sync, rear-curtain slow sync, off Can be adjusted by -3 to +1 EV in increments of 1/3 or 1/2 EV in P, S, A, M and modes
Flash compensation	Can be adjusted by -3 to +1 EV in increments of 1/3 or 1/2 EV in P, S, A, M and modes
Flash-ready indicator	Lights when built-in flash or optional flash unit is fully charged; blinks after flash is freed at full output
Accessory shoe	ISO 518 hot-shoe with sync and data contacts and safety lock
Nikon Creative Lighting System (CLS)	Advanced Wireless Lighting supported with SB-R10, SB-900, SB-800, SB-700 or SB-500 as a master flash or SU-800 as commander; Wireless Color Information Communication supported with all CLS-compatible flash units
Sync terminal	AS-15 Sync terminal Adapter (available separately)
White balance	Auto, incandescent, fluorescent (7 types), direct sunlight, flash, cloudy shade, preset manual, all except preset manual with fine-tuning
White balance bracketing	3 shots in steps of 1
Live view lens servo	• Autofocus (AF): Single-servo AF (AF-S); full-time-servo AF (AF-F) • Manual focus (MF)
AF-area modes	Face-priority AF, wide-area AF, normal-area AF, subject-tracking AF
Autofocus	Contrast-detect AF anywhere in frame (camera selects focus point automatically when face-priority AF or subject-tracking AF is selected)
Automatic scene selection	Available in [M] and [Q] modes
Movie metering	TLT exposure metering using main image sensor
Movie metering method	Matrix
Frame size (pixels) and frame rate	• 1920 x 1080, 60p (progressive)/50p/30p/25p/24p, *high/normal • 1280 x 720, 60p/50p, *high/normal • 640 x 424, 30p/25p, *high/normal Frame rates of 30p (actual frame rate 29.97 fps) and 60p (actual frame rate 59.94 fps) are available when NTSC is selected for video mode; 25p and 50p are available when PAL is selected for video mode; actual frame rate when 24p is selected is 23.976 fps
File format	MOV
Video compression	H.264/MPEG-4 Advanced Video Coding
Audio recording format	Linear PCM
Audio recording device	Built-in or external stereo microphone; sensitivity adjustable
Maximum length	29 min, 59 s (2 min. in 1920 x 1080; 60p/50p, 3 min. in miniature effect mode)
ISO sensitivity	ISO 100 to 25600
Monitor	8.1 cm (3.2 in.) (3.2:1) approx. 1037k-dot (1720 x 480 x 3 = 1,036,800 dots), TFT vari-angle LCD touch screen with 170° viewing angle, approx. 100% frame coverage, brightness adjustment and eye-sensor controlled on/off
Playback	Full-frame and thumbnail 14, 12 or 80 images or calendar) playback with playback zoom, movie playback, photo and/or movie slide shows, histogram display, highlights, photo information, location data display, auto image rotation, picture rating and image comment (up to 36 characters)
USB	Hi-Speed USB, connection to built-in USB port is recommended
Video output	NTSC, PAL
HDMI output	Type C HDMI connector
Accessory terminal	Wireless remote controllers: WR-R1, WR-R10 (available separately), Remote cord: MC-DC2 (available separately), GPS units: GP-1/GP-1A (available separately)
Audio input	Stereo mini-pin jack (3.5-mm diameter); supports optional ME-1 Stereo Microphone
Wireless standards	IEEE 802.11b, IEEE 802.11g
Communications protocols	• IEEE 802.11b, DSSS/CCK • IEEE 802.11g, OFDM
Operating frequency	2412 to 2462 MHz (channels 1 to 11)
Range (line of sight)	Approx. 30 m/98 ft (assumes no interference; range may vary with signal strength and presence or absence of obstacles)
Data rate	54 Mbps; maximum logical data rate according to IEEE standard; actual rates may differ
Security	• Authentication: Open system, WPA2-PSK • Encryption: AES
Wireless setup	Supports WPS
Access protocols	Infrastructure
Supported languages	Arabic, Bengali, Bulgarian, Chinese (Simplified and Traditional), Czech, Danish, Dutch, English, Finnish, French, German, Greek, Hindi, Hungarian, Indonesian, Italian, Japanese, Korean, Malay, Norwegian, Persian, Polish, Portuguese (Portugal and Brazil), Romanian, Russian, Serbian, Spanish, Swedish, Tamil, Telugu, Thai, Turkish, Ukrainian, Vietnamese
Battery	One EN-EL14a Rechargeable Li-ion Battery
AC adapter	EN-ES14 AC Adapter; requires EP-S5 Power Connector (available separately)
Tripod socket	1/4 in. (ISO 1222)
Dimensions (W x H x D)	Approx. 124 x 97 x 70 mm/4.9 x 3.9 x 2.8 in.
Weight	Approx. 470 g/1 lb 0.6 oz with battery and memory card but without body cap; approx. 420 g/14.9 oz (camera body only)
Operating environment	Temperature: 0 to 40°C/32 to 104°F; humidity: 85% or less (no condensation)
Supplied accessories	EN-EL14a Rechargeable Li-ion Battery, MH-24 Battery Charger, DK-25 Rubber Eyecup, EC-EF23 USB Cable, EG-CP16 Audio/Video Cable, AN-DC3 Camera Strap, BF-1B Body Cap
	• The SD, SDHC and SDXC logos are trademarks of SD-3C, LLC. • PictBridge is a trademark. • HDMI, the HDMI logo and High-Definition Multimedia Interface are trademarks or registered trademarks of HDMI Licensing, LLC. • Wi-Fi is a registered trademark of the Wi-Fi Alliance®. • Google, Android™, Nexus and Google Play are trademarks or registered trademarks of Google Inc. • Products and brand names are trademarks or registered trademarks of their respective companies. • Images in viewfinders, on LCDs and monitors shown in this brochure are simulated. • All sample images are ©iDixie Dixon.

Specifications and equipment are subject to change without any notice or obligation on the part of the manufacturer. February 2015 © 2015 Nikon Corporation

WARNING **PLEASE ENSURE CORRECT USAGE, READ MANUALS CAREFULLY BEFORE USING YOUR EQUIPMENT.** **THIS DOCUMENTATION IS SUPPLIED ON CD-ROM ONLY.**

Visit the Nikon Europe website at: www.europe-nikon.com



Nikon Europe B.V. Trippelios 100, Burgenweeshuispad 101, 1076 ER Amsterdam, The Netherlands
 Nikon U.K. Ltd. Nikon House, 380 Richmond Road, Kingston upon Thames, Surrey KT2 5PR, U.K. www.nikon.co.uk
 NIKON CORPORATION Shinagawa Ritchey Tower C, 2-15-3, Konan, Minato-ku, Tokyo 108-6290, Japan www.nikon.com